

DUCTO

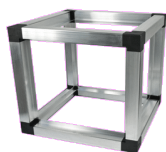
Compact unit for air conditioning systems for concealed ceiling and wall installation;
EC motors with constant flow rate for self-adaptation to the installed system;
Thermal and cooling powers from 2 to 6 kW



GENERAL FEATURES

STRUCTURE

High resistance structure with self-supporting frame in galvanized sheet with internal thermal and acoustic insulation;
Choice of materials with high thermal and acoustic insulation characteristics



FANS

The unit is equipped with low energy consumption EC centrifugal fans with forward blades for low noise.



EXCHANGE BATTERY

Battery optimized for the best heat exchange



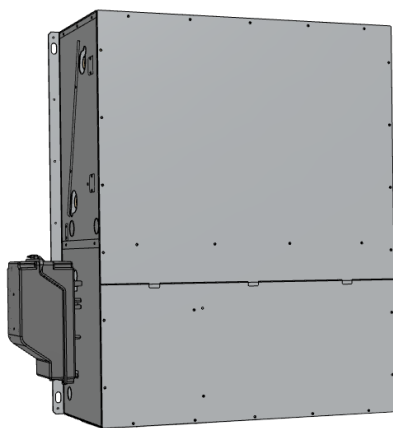
FILTRATION

Flat filters with Coarse filtration class

TYPES OF INSTALLATION

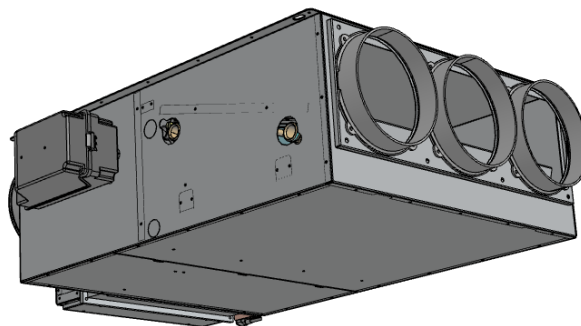
The installation possibilities of the unit are illustrated below:

VERTICAL INSTALLATION



VERTICAL INSTALLATION

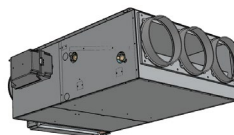
HORIZONTAL INSTALLATION



RECESSED HORIZONTAL INSTALLATION

UNIT CONFIGURATION

	-1-	-2-	-3-
SLC	400	Z	I



<p>(1) Defines the size Models from 400 - 600 - 800 - 1000 - 1200</p>	<p>2) Type of installation Z: Universal recessed horizontal / vertical</p>	<p>3) Electronic type S: For 0-10 V connection I: For connection with remote controls</p>
--	---	--

ADJUSTMENT DESCRIPTION

SLC UNIT VERSIONS I

CARDS ON THE MACHINE



REMOTE PANELS

REMOTE PANEL EEA649II / EEB649II - EFA649II / EFB649II
(MANDATORY)



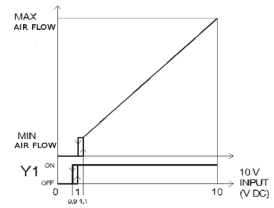
EXTERNAL CONTROLS

ON OFF



SLC UNITS VERSIONS S

0-10V SIGNAL



COMMANDS

THROUGH EXTERNAL COMMANDS 0-10V DC
YOU CAN OBTAIN A FLOW REGULATION
AIR COIL OF THE FAN COIL

PERFORMANCE UNIT

GENERAL TECHNICAL DATA

Size	SLC 400	SLC 600	SLC 800	SLC 1000	SLC 1200
------	---------	---------	---------	----------	----------

AEREAULIC DATA VERSION

Nominal air flow max speed	m ³ / h	390	560	730	905	1150
Nominal air flow med speed	m ³ / h	260	350	440	550	750
Nominal air flow min. speed	m ³ / h	120	180	240	260	280
Useful pressure	Pa	90	130	110	140	140
Nominal absorbed power of recirculation fan	kW	0.085	0.15	0.17	0.17	0.24

THERMAL / REFRIGERATING PERFORMANCE DATA

Total cooling capacity 1	kW	1.9	3.0	3.5	4.4	5.9
Sensible cooling capacity 1	kW	1.4	2.2	2.8	3.6	4.2
Water flow	m ³ / h	0.33	0.52	0.60	0.76	1.0
Loss of pressure	kPa	3.9	11	21	14	16
Total heat output 2	kW	2.3	3.2	3.9	5.3	6.2
Water flow	m ³ / h	0.39	0.55	0.67	0.91	1.1
Loss of pressure	kPa	7.5	11	21	16	19

(1) Coil water temperature 7/12 ° C, ambient air temperature 27 ° C bs and 19 ° C bu (EU regulation 2016/2281)

(2) Coil water temperature 45/40 ° C, ambient air temperature 20 ° C (EU regulation 2016/2281)

SOUND DATA(Data referred to UNI EN 3741 and UNI EN 3744)

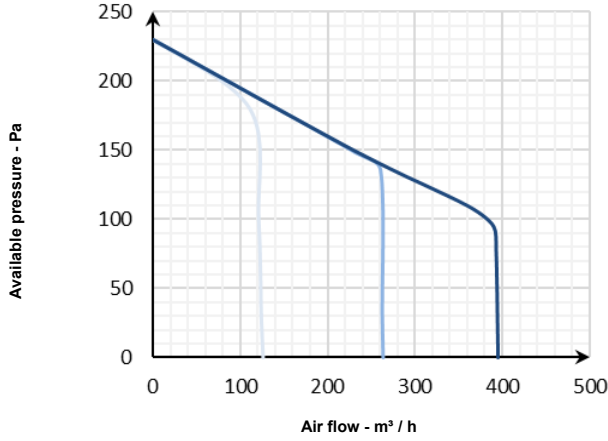
Sound power Lw transmitted by the structure	dB (A)	55	59	60	62	63
Sound power Lw radiated into the canal	dB (A)	59	64	68	69	71
Average sound pressure Lp to 1Mt	dB (A)	43	46	48	49	50
Average sound pressure Lp to 3 Mt	dB (A)	37	38	40	41	42

ELECTRICAL DATA

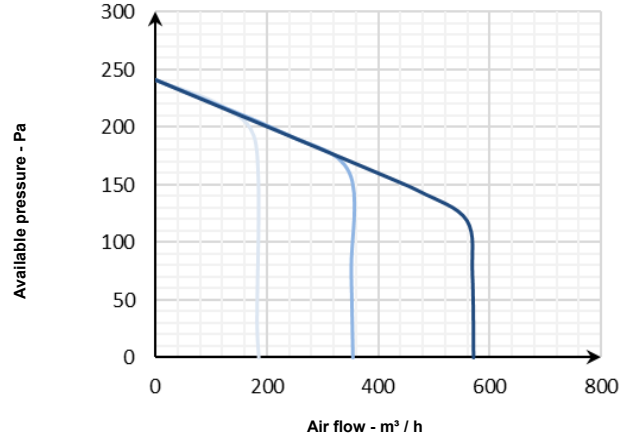
Diet	V / Ph / Hz	230/1/50				
Max absorbed power	kW	0.09	0.19	0.19	0.22	0.28
Max absorbed current	TO	0.7	1.3	1.3	1.5	1.9

AERAILIC CURVES

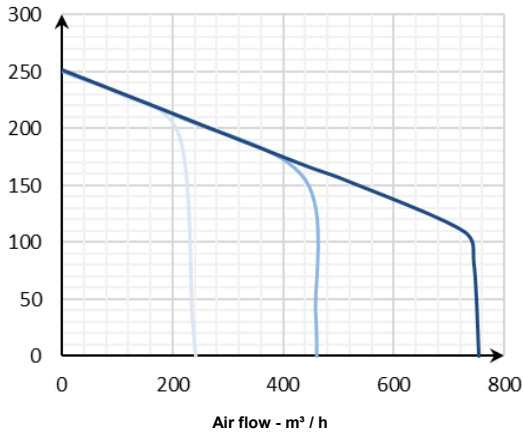
SLC 400



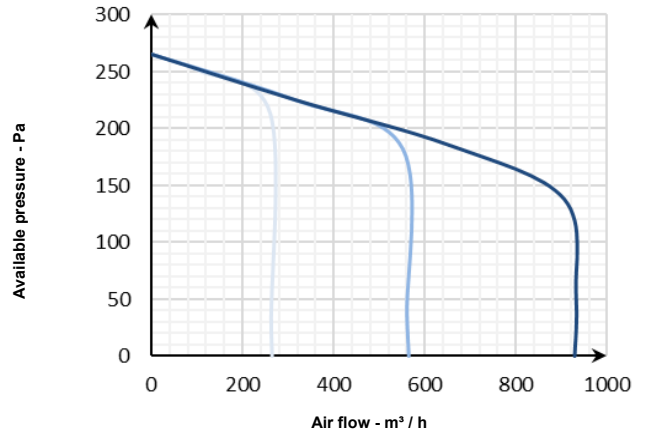
SLC 600



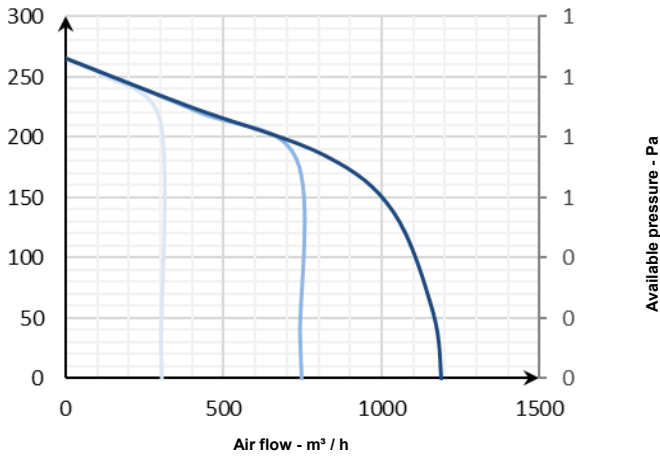
SLC 800



SLC 1000

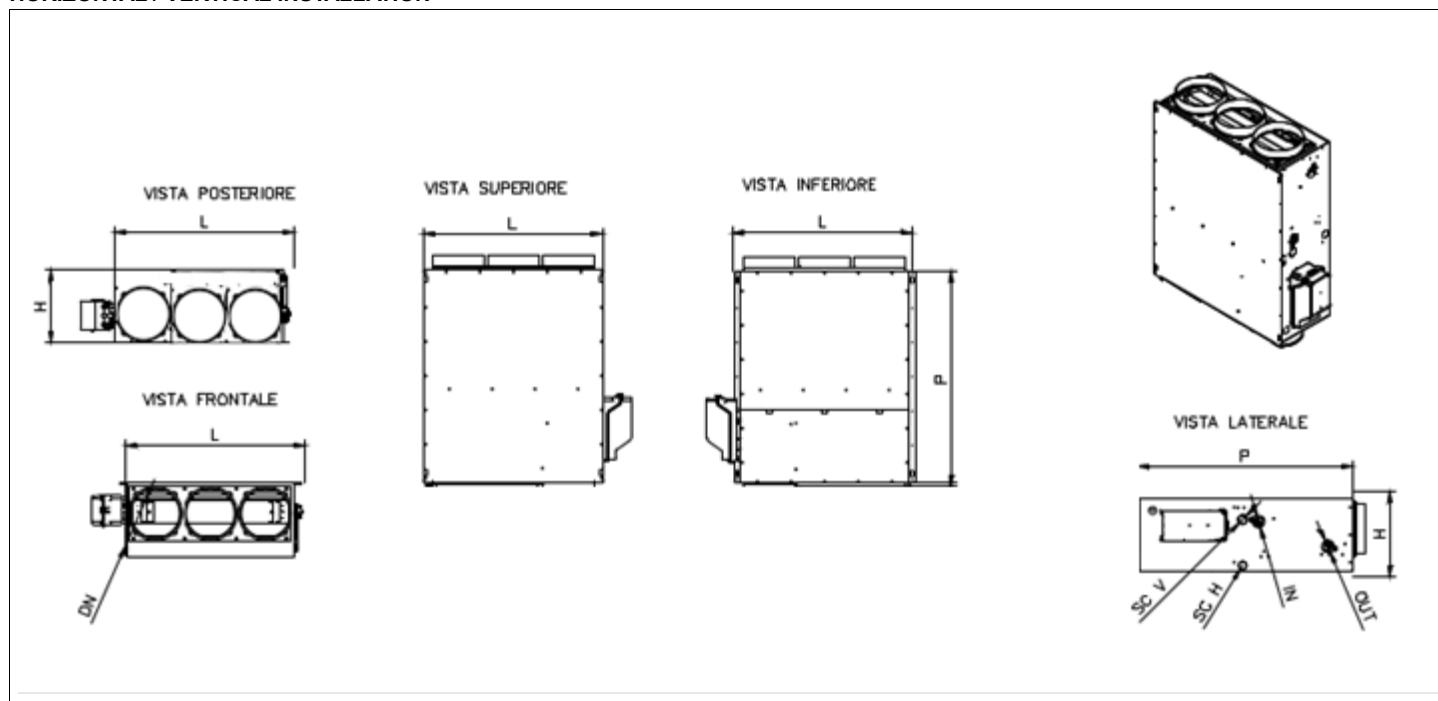


SLC 1200





DIMENSIONAL DATA



HORIZONTAL / VERTICAL INSTALLATION





Template	SLC	400	600	800	1000	1200
Width L	mm	590	790	990	1190	1440
Depth P	mm	690	690	690	690	690
Depth P2	mm	195	195	195	195	195
Height H.	mm	240	240	240	240	240
Fresh air inlet DN1	mm	160	160	160	160	160
Recirculation air inlet DN2	mm	2x160	3x160	4 x 160	6 x 160	7 x 160
Delivery bxh	mm	510x150	710x150	910x150	1110x150	1310x150
Delivery / return water connections	OR	3/4 "	3/4 "	3/4 "	3/4 "	3/4 "
Condensation	OR	16/20 mm	16/20 mm	16/20 mm	16/20 mm	16/20 mm
Weight version W	kg	32	42	46	54	65
UNIT VIEW FROM ABOVE						

LIST OF ACCESSORIES

COMMANDS FOR WALL CONTROL		
<p>SMART TOUCH wall control panel for mounting on 503 box or on the wall; Speed, temperature and operating modes control; Maximum connection length 50 m if made with 4-wire braided shielded cable.</p>		


COMMANDS FOR WALL CONTROL		
<p>SMART TOUCH wall control panel for mounting on 503 box or on the wall. Speed, temperature and operating modes control; Maximum connection length 50 m if made with 4-wire braided shielded cable. Integrated WIFI module for local and remote communication and management with APP;</p>		

2-WAY VALVE GROUP		
<p>2-way zone valve operated directly by the unit to allow the hydronic battery to be powered with On-off control from the unit.</p>		

3-WAY VALVE GROUP		
<p>3-way zone valve operated directly by the unit to allow the hydronic battery to be powered with On-off control from the unit.</p>		

DELIVERY PLATE		
<p>Delivery plate with: Size 400 = 2 attacks of 160 mm Size 600 = 3 attacks of 160 mm Size 800 = 4 attacks of 160 mm Size 1000 = 6 attacks of 160 mm Size 1200 = 7 attacks of 160 mm</p>		

SHOOTING PLATE	
Shooting plate with: Size 400 = 2 attacks of 160 mm Size 600 = 3 attacks of 160 mm Size 800 = 4 attacks of 160 mm Size 1000 = 6 attacks of 160 mm Size 1200 = 7 attacks of 160 mm	

REPLACEMENT FILTER	
Replacement filter kit	

BUTLER	
BUTLER: codes, accessories and price list described in the specific section	

DELIVERY GRID	
Delivery grille in aluminum with double row of adjustable fins, white color. Dimensions: 450x225 mm	

SUCTION GRID	
Suction grille with extractable aluminum filter, white color. Dimensions: 450x225 mm	

DUCTABLE FANCOILS

DATA SHEET



ALUFONIC INSULATED FLEXIBLE HOSE

Flexible duct with aluminum / polyester / aluminum wall. Microperforated to attenuate the noise of the passage of air. Helical spiral incorporated in harmonic steel wire. Thermal insulation coating in polyester fiber (thickness 25 mm, 16 Kg / m³) to prevent the dispersion of microfibers during the passage of air. External protection in aluminized film (flame retardant). Operating temperature: -30 / + 140 ° C. Bending radius: min. 800 mm

UNIVERSAL INSULATED STEEL PLENUM FOR SLIM BOX SYSTEM

Insulated plenum for supply / return with 2 inlets DN 160 mm, 1 cap DN 160 mm and grid connection. Dimensions: 450x175x175 mm

UNIT ORDER CODES

For connection with remote controls, water connections and electrical panel on the right

Template	Description	Code
SLC 400	Horizontal ceiling fan coil with centrifugal fans. Hydraulic connections: Eurokonus ¾ ". Modulating speed. DC Inverter. Horizontal and vertical recessed installation with electronic card with continuous modulation for connection to the EEA649II / EEB649II or EFA649II / EFB649II wall control (to be ordered separately).	FASN04R01II-0P00
SLC 600		FASN06R01II-0P00
SLC 800		FASN08R01II-0P00
SLC 1000		FASN10R01II-0P00
SLC 1200		FASN12R01II-0P00

For 0-10 V connection, water connections and electrical panel on the right

Template	Description	Code
SLC 400	Horizontal ceiling fan coil with centrifugal fans. Hydraulic connections: Eurokonus ¾ ". Modulating speed. DC Inverter. Horizontal and vertical recessed installation with electronic card for 0-10 V interface.	FASN04R01II-0J00
SLC 600		FASN06R01II-0J00
SLC 800		FASN08R01II-0J00
SLC 1000		FASN10R01II-0J00
SLC 1200		FASN12R01II-0J00

For connection with remote controls, water connections and electrical panel on the left

Template	Description	Code
SLC 400	Horizontal ceiling fan coil with centrifugal fans. Hydraulic connections: Eurokonus ¾ ". Modulating speed. DC Inverter. Horizontal and vertical recessed installation with electronic card with continuous modulation for connection to the EEA649II / EEB649II or EFA649II / EFB649II wall control (to be ordered separately).	FASN04O01II-0P00
SLC 600		FASN06O01II-0P00
SLC 800		FASN08O01II-0P00
SLC 1000		FASN10O01II-0P00
SLC 1200		FASN12O01II-0P00

For 0-10 V connection, water connections and electrical panel on the left

Template	Description	Code
SLC 400	Horizontal ceiling fan coil with centrifugal fans. Hydraulic connections: Eurokonus ¾ ". Modulating speed. DC Inverter. Horizontal and vertical recessed installation with electronic card for 0-10 V interface.	FASN04O01II-0J00
SLC 600		FASN06O01II-0J00
SLC 800		FASN08O01II-0J00
SLC 1000		FASN10O01II-0J00
SLC 1200		FASN12O01II-0J00

Commands for wall control

Template	all	
Description	SMART TOUCH wall-mounted control panel with thermostat and ambient temperature and relative humidity probe. Black colour	SMART TOUCH wall-mounted control panel with thermostat and temperature and relative humidity probe in rooms. White color
Code	EEA649II	EEB649II

Touch remote control panel with Wifi

Template	all	
Description	SMART TOUCH wall-mounted control panel with thermostat and room temperature and relative humidity probe with integrated WIFI module, InnoAPP. Black colour	SMART TOUCH wall-mounted control panel with thermostat and room temperature and relative humidity probe with integrated WIFI module, InnoAPP. White color
Code	EFA649II	EFB649II

2-way valve group

Template	all	
Description	2-way manual valve group	
Code	I20205II	

2-way valve group

Template	all	
Description	2-way valve group (inlet valve and lockshield valve) with thermoelectric motor	
Code	V20139II	

3-way valve group

Template	all	
Description	3-way diverter valve unit with thermoelectric motor (complete with three-way inlet valve and lockshield)	
Code	V30361II	

Air delivery plate 2 inlets

Template	SLC 400	
Description	Delivery plate with 2 circular inlets, DN 160 mm	
Code	GR1100II	

3-way air delivery plate

Template	SLC 600	
Description	Delivery plate with 3 circular inlets, DN 160 mm	
Code	GR1101II	

Air delivery plate 4 inlets

Template	SLC 800
Description	Delivery plate with 4 circular inlets, DN 160 mm
Code	GR1102II

6-way air delivery plate

Template	SLC 1000
Description	Delivery plate with 6 circular inlets, DN 160 mm
Code	GR1103II

Air delivery plate 7 inlets

Template	SLC 1200
Description	Delivery plate with 7 circular inlets, DN 160 mm
Code	GR1201III

Return plenum - air recirculation 2 inlets

Template	SLC 400
Description	Return plate with 2 circular inlets, DN 160 mm
Code	GR1104II

Return plenum - air recirculation 3 inlets

Template	SLC 600
Description	Return plate with 3 circular inlets, DN 160 mm
Code	GR1105II

Return plenum - air recirculation 4 inlets

Template	SLC 800
Description	Return plate with 4 circular inlets, DN 160 mm
Code	GR1106II

Return plenum - air recirculation 6 inlets

Template	SLC 1000
Description	Return plate with 6 circular inlets, DN 160 mm
Code	GR1107II

Return plenum - air recirculation 7 inlets

Template	SLC 1200
Description	Return plate with 7 circular inlets, DN 160 mm
Code	GR1200II

Replacement filter kit

Template	SLC 400	SLC 600	SLC 800	SLC 1000	SLC 1200
Description	Replacement filter kit				
Code	GR1226II	GR1227II	GR1228II	GR1229II	GR1230II

Delivery grille

Template	all
Description	Delivery grille in aluminum with double row of adjustable fins, white color. Dimensions: 450x225 mm
Code	GR1119II

Aspiration grid

Template	all
Description	Suction grille with extractable aluminum filter, white color. Dimensions 450x 225 mm
Code	GR1120II

Insulated aluphonic hose

Template	all
Description	Insulated aluphonic hose DN 160 mm. Supplied in 10 m spools, price in € / m
Code	GR0945II

Universal steel insulated plenum box for one box system

Template	all
Description	Insulated plenum for supply / return with 2 DN 160mm inlets, 1 DN160 plug and grid connection. Dimensions: 450x175x175 mm
Code	GR1118II

CE marking

The CE marking (present on each machine) certifies compliance with the following Community standards:

- Low Voltage Directive 2014/35 / EC
- Electromagnetic Compatibility Directive 2014/30 / EC

N420671A - Rev.01 01-2022



The data contained in this technical catalog can be changed by the manufacturer without prior notice.